

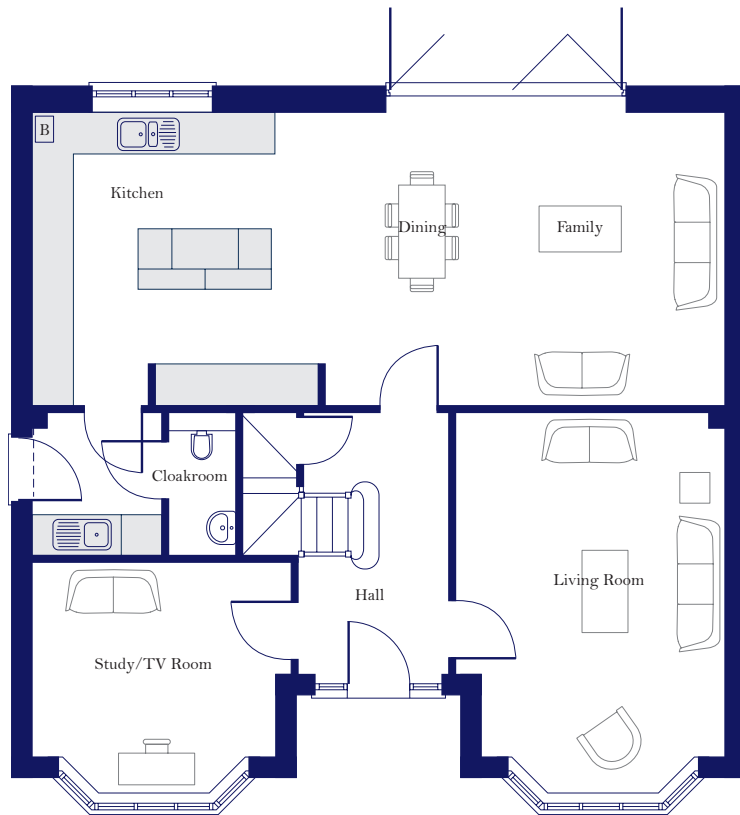
— THE —  
**MARLBROOK SUPREME**

*Five Bedroom Home with Double Garage and Room Above*



*Plots 4 & 161*





## GROUND FLOOR

Kitchen/Dining/ Family Area	10.354m x 4.345m	33'11" x 14'3"
Living Room	5.657m x 3.994m (max into bay)	18'6" x 13'1" (max into bay)
Study/TV Room	3.835m x 3.423m (max) (max into bay)	12'6" x 11'2" (max) (max into bay)

See Supreme Garage page for garage plans



## FIRST FLOOR

Bedroom 1	4.067m x 4.004m	13'4" x 13'1"
Bedroom 2	3.836m x 3.524m	14'1" x 11'6"
Bedroom 3	4.294m x 4.004m (max)	14'1" x 13'1" (max)
Bedroom 4	4.025m x 3.144m (max)	13'2" x 10'3" (max)
Bedroom 5	3.144m x 2.067m	10'3" x 6'9"

**B** Boiler   **HWS** Hot Water Storage   **W** Fitted Wardrobe   - - - Reduced Head Height

Some items shown in this key may be subject to change, and positions could vary from those indicated on this floorplan. Please refer to Sales Advisor for details of your selected plot. Computer generated image shown opposite. External finishes, landscaping and configuration may vary from plot to plot. Please refer to Sales Advisor for further details. All dimensions are approximate and should not be used for carpet sizes, appliance spaces, or furniture. Furniture not to scale and all positions are indicative. Wardrobes are shown to suggest position only, and are not included as standard unless otherwise stated. We operate a policy of continuous improvement and individual features such as kitchen and bathroom layouts, doors, windows, garages and elevational treatments may vary from time to time. Consequently these particulars should be treated as general guidance only and do not constitute a contract, part of a contract or a warranty.

