



H&S

**Horton  
& Storey**

VERSTONE ROAD,  
£384,950



H&S



**APPROACH**

Via a brick paved driveway leading to the porch and access to the garage.

**GROUND FLOOR  
ENTRANCE HALL**

Stairs leading to the first-floor landing, central heating radiator and under stairs storage.

**LOUNGE/DINER 9' 10" x 27' 10" (3.0m x 8.5m)**

A large through lounge with a double-glazed bay window to the front elevation, central heating radiator, feature fire with fireplace and a set of double-glazed patio doors to the rear elevation leading to the garden.



**KITCHEN 8' 6" x 13' 5" (2.6m x 4.1m)**

An extended kitchen benefiting from a range of wall and floor base units with work surface over, incorporating an inset stainless-steel sink with mixer tap and drainer. There is plumbing for a washing machine, plumbing for a dish washer, tiling to the floor, a double-glazed window to the rear elevation and a double-glazed door to the rear elevation, leading to the garden. There is a door to the garage and a pantry.



**GARAGE** 16' 0" x 8' 2" (4.9m x 2.5m)

**FIRST FLOOR**

**LANDING**

An obscure double-glazed window to the south elevation, doors to rooms and access to the boarded loft.

**BEDROOM ONE** 9' 10" x 15' 1" (3.0m x 4.6m)

A double bedroom with a double-glazed bay window to the front elevation, central heating radiator and fitted wardrobes.

**BEDROOM TWO** 10' 2" x 12' 5" (3.1m x 3.8m)

A double bedroom with a double-glazed window to the rear elevation, overlooking the rear garden and a central heating radiator.

**BEDROOM THREE** 5' 6" x 9' 2" (1.7m x 2.8m)

Having a double-glazed window to the south elevation, central heating radiator and built-in storage cupboard.

**W.C.**

Obscure double-glazed window to the rear elevation, w.c, sink and tiled floor.

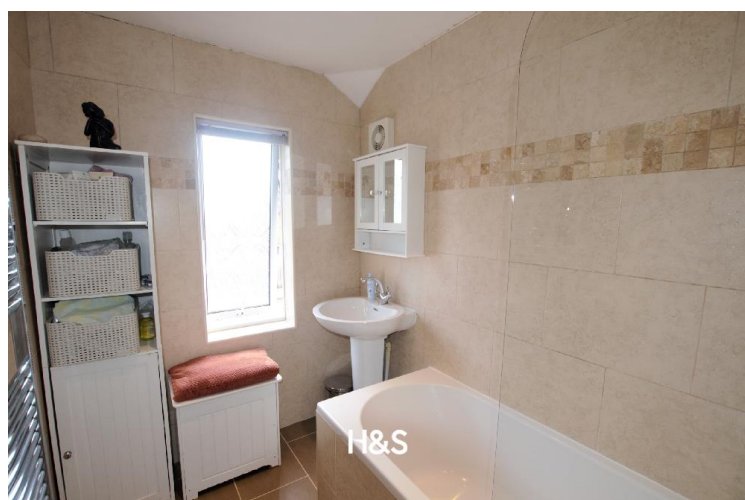
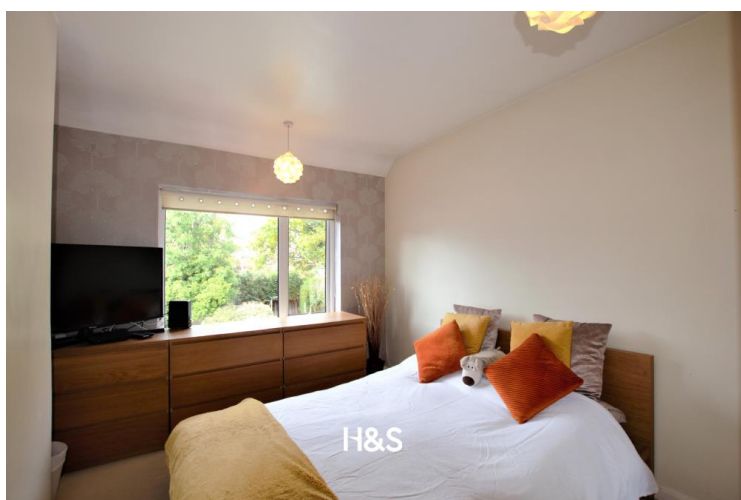


**BATHROOM**

A fully tiled bathroom with suite comprising of a panelled bath with shower over, sink, chrome heated towel rail and an obscure double-glazed window to the front elevation.

**REAR GARDEN**

Brick paved patio area leading to the lawn with mature shrubs to the borders and fencing to boundaries





Agents Note: Whilst every care has been taken to prepare these sales particulars, they are for guidance purposes only. All measurements are approximate and for general guidance purposes only and whilst every care has been taken to ensure their accuracy, they should not be relied upon and potential buyers are advised to recheck the measurements.